

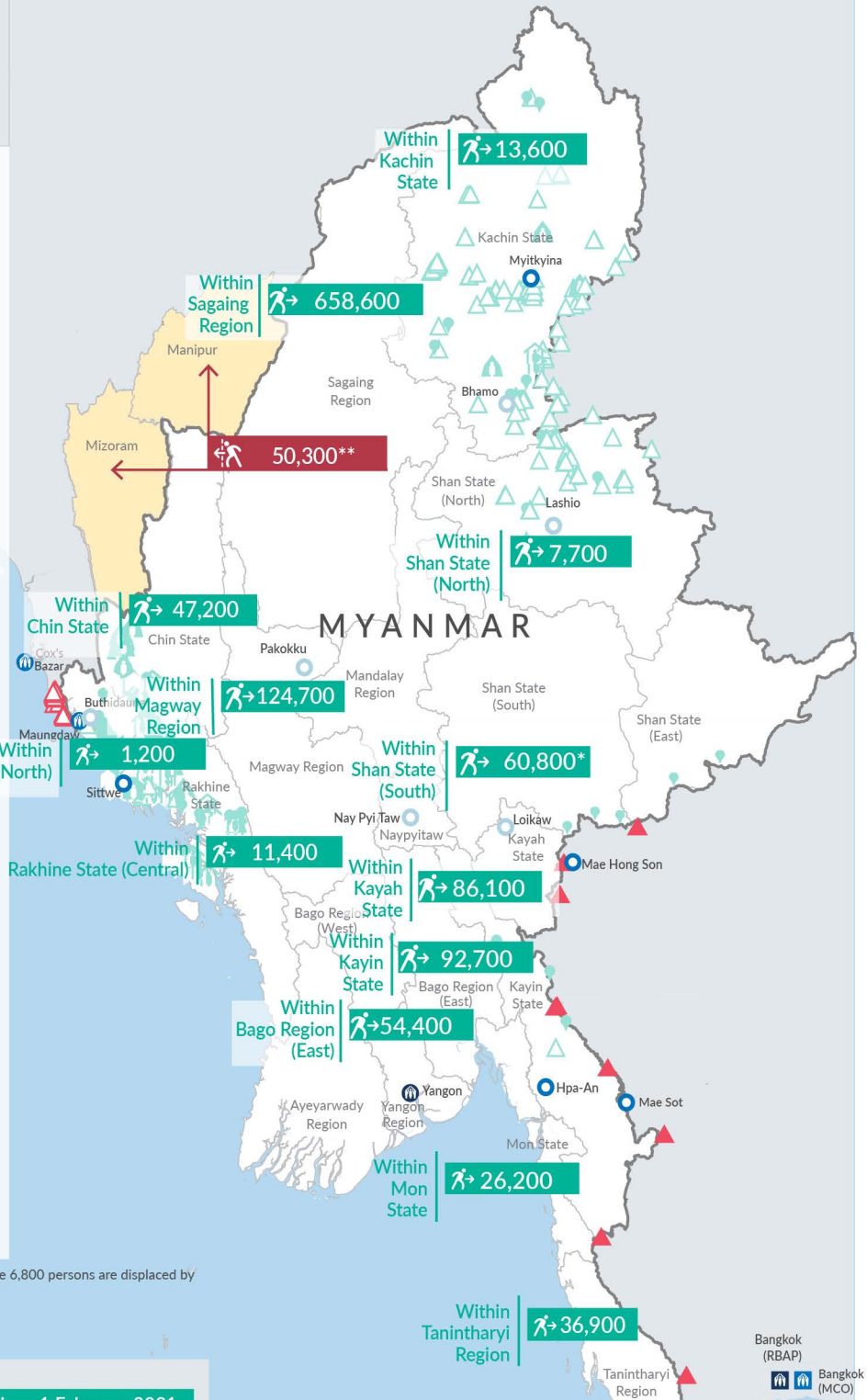
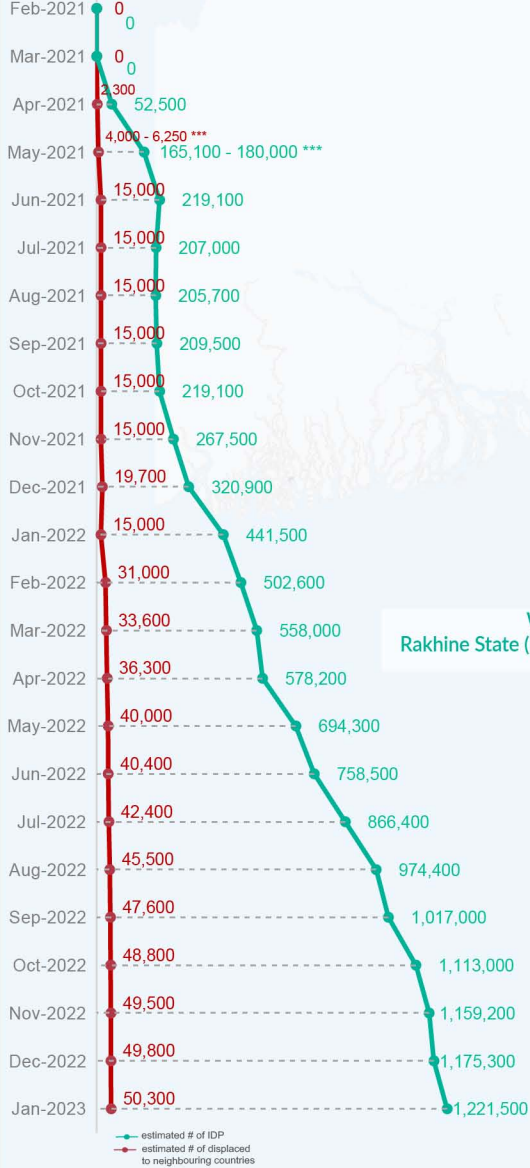


Key figures

Estimated # of IDPs  **1,221,500**
 Estimated # of displaced to neighbouring countries  **50,300**

Source : UN in Myanmar


Estimated displacement figures by Month



*54,000 persons are displaced by armed conflict in neighbouring Kayah State while 6,800 persons are displaced by inter-EAO conflict between SSPP and RCSS

**UN Estimates

***Range of figures was used while data collection was in progress

 Estimated internal displacement within Myanmar since 1 February 2021 (rounded to the nearest hundred)

 Estimated displacement to neighbouring countries since 1 February 2021, who remain displaced (rounded to the nearest hundred)

-  IDP unplanned settlement (pre-1 Feb 2021)
-  IDP Center (pre-1 Feb 2021)
-  IDP spontaneous location (pre-1 Feb 2021)
-  IDP planned settlement (pre-1 Feb 2021)
-  Temporary shelter for displaced people from Myanmar
-  Refugee, planned settlement
-  States/Provinces with new arrivals
-  UNHCR Regional Bureau
-  UNHCR Multi-country office
-  UNHCR Country Office
-  UNHCR Sub-Office
-  UNHCR Field Office
-  UNHCR Field Unit
-  International boundaries

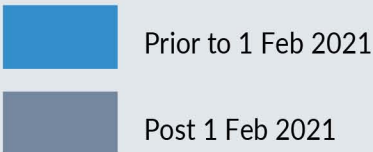
The boundaries and names shown on this map do not imply official endorsement or acceptance by the United Nations

Key figures

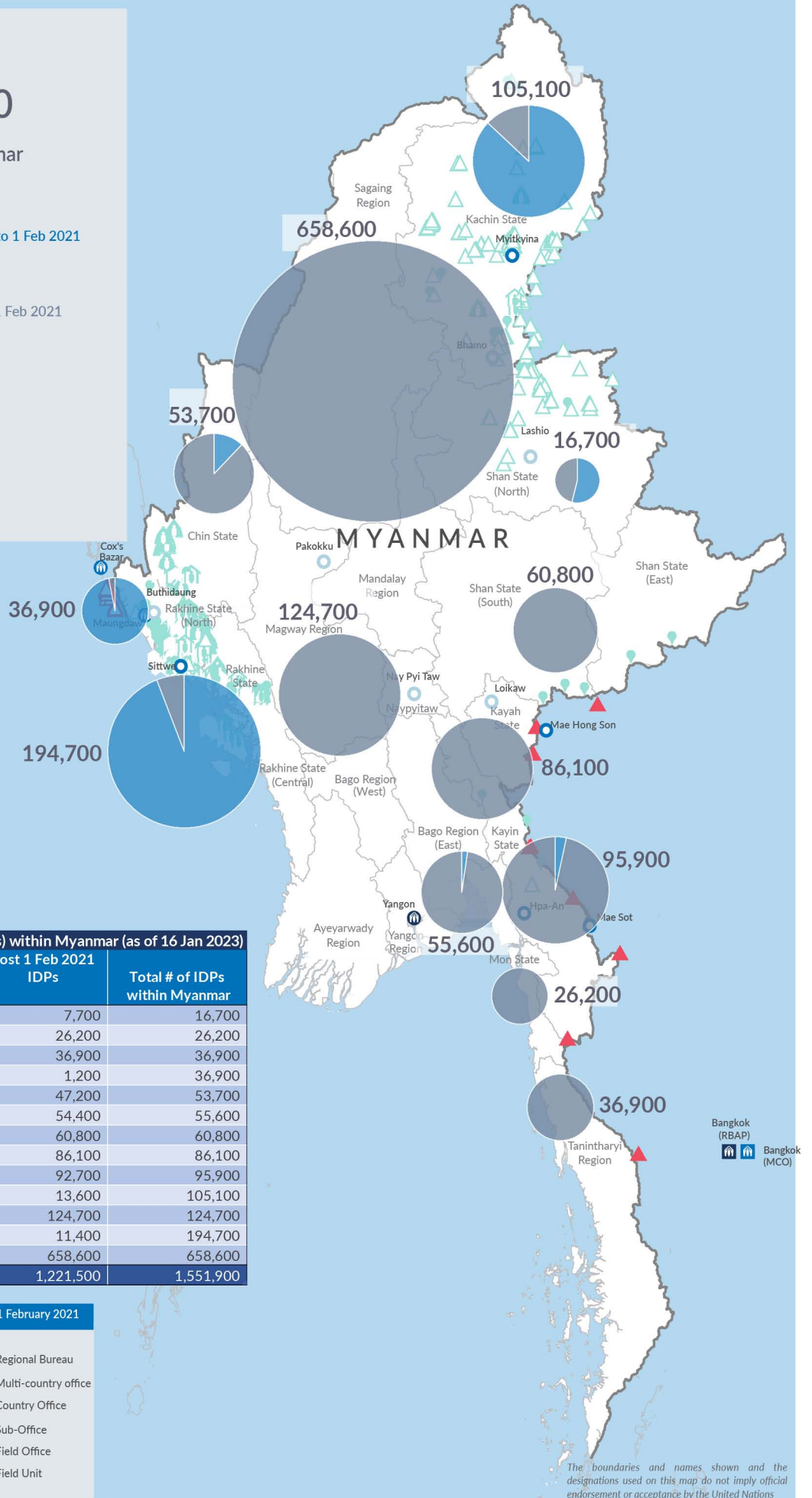

1,551,900

Estimated total IDPs within Myanmar


330,400
 Estimated # of IDPs displaced prior to 1 Feb 2021
 (As of 30 June, 2022)


1,221,500
 Estimated # of IDPs displaced post 1 Feb 2021
 (As of 16 Jan, 2023)


Source : UN in Myanmar


Estimated total internally displaced person (IDPs) within Myanmar (as of 16 Jan 2023)

State/Region	Prior to 1 Feb 2021 IDPs	Post 1 Feb 2021 IDPs	Total # of IDPs within Myanmar
Shan State (North)	9,000	7,700	16,700
Mon State	-	26,200	26,200
Tanintharyi Region	-	36,900	36,900
Rakhine State (North)	35,700	1,200	36,900
Chin State	6,500	47,200	53,700
Bago Region (East)	1,200	54,400	55,600
Shan State (South)	-	60,800	60,800
Kayah State	-	86,100	86,100
Kayin State	3,200	92,700	95,900
Kachin State	91,500	13,600	105,100
Magway Region	-	124,700	124,700
Rakhine State (Central)	183,300	11,400	194,700
Sagaing Region	-	658,600	658,600
Grand Total	330,400	1,221,500	1,551,900

Estimated internal displacement within Myanmar Pre+Post 1 February 2021 (rounded to the nearest hundred)

-  IDP unplanned settlement (pre-1 Feb 2021)
-  IDP Center (pre-1 Feb 2021)
-  IDP spontaneous location (pre-1 Feb 2021)
-  IDP planned settlement (pre-1 Feb 2021)
-  Temporary shelter for displaced people from Myanmar
-  Refugee, planned settlement
-  UNHCR Regional Bureau
-  UNHCR Multi-country office
-  UNHCR Country Office
-  UNHCR Sub-Office
-  UNHCR Field Office
-  UNHCR Field Unit

The boundaries and names shown and the designations used on this map do not imply official endorsement or acceptance by the United Nations