

Overview of Refugee and Asylum-Seekers Population

(as of 31 December 2022)

1.35 MILLION approx

TOTAL REGISTERED PERSONS OF CONCERN



68.7%
OUTSIDE REFUGEE VILLAGES



31.3%
LIVING IN REFUGEE VILLAGES

1.30 MILLION approx

AFGHAN (PoR) CARD HOLDERS

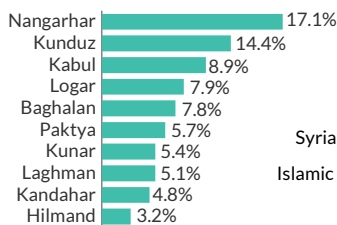
10,116

REGISTERED REFUGEES UNDER UNHCR'S MANDATE

38,288

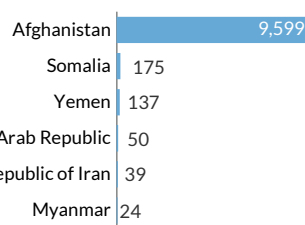
REGISTERED ASYLUM SEEKERS UNDER UNHCR'S MANDATE

% PLACE OF ORIGIN (TOP 10)



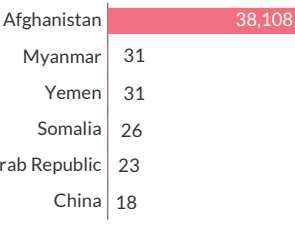
19.7% From other regions

COUNTRY OF ORIGIN



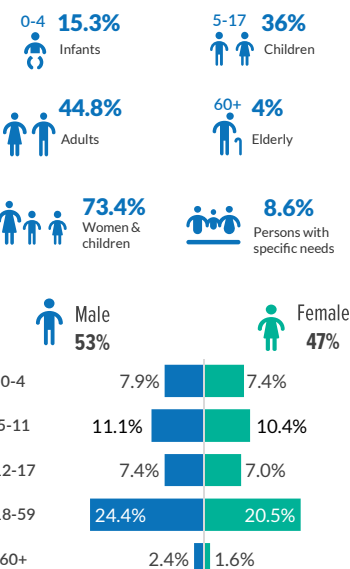
92 From other countries

COUNTRY OF ORIGIN



51 From other countries

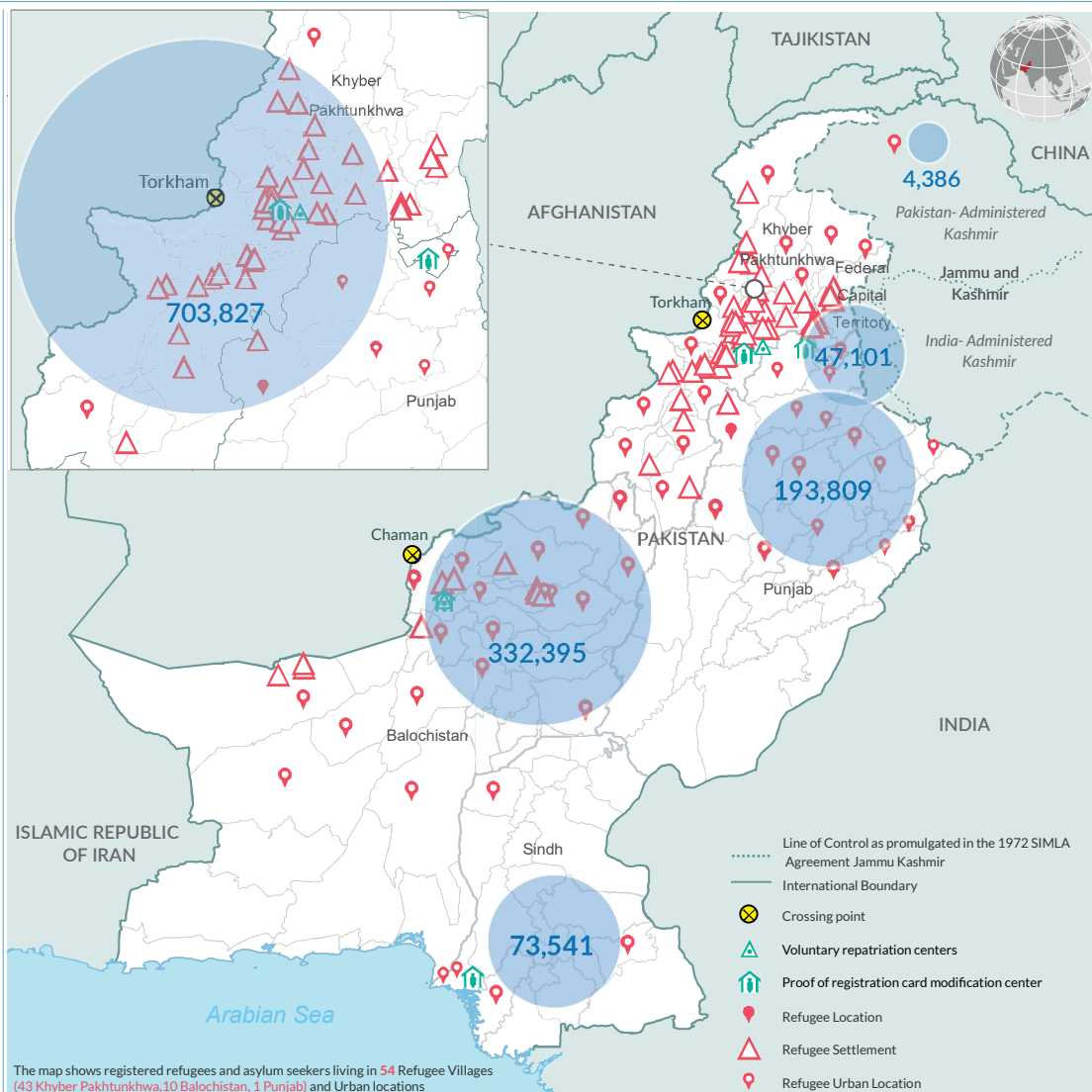
AGE AND GENDER COMPOSITION



336,855 Households

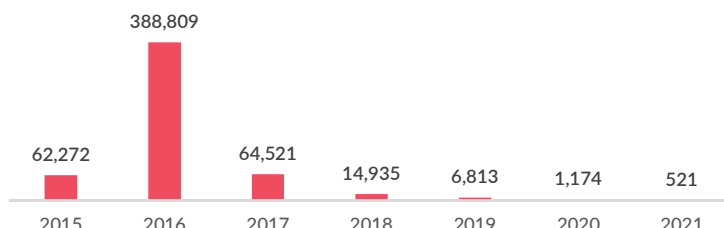
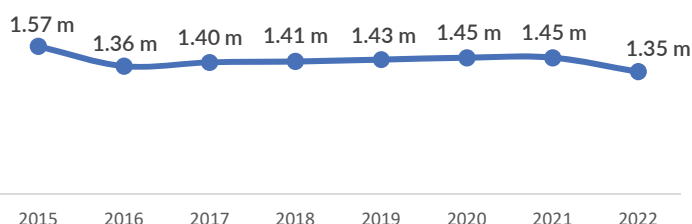
73,768 (21.8%) Female-Headed

The Population Statistics are compiled quarterly using data from Afghan National Registration (ANR) Database and UNHCR Profile Global Registration System (Progres V4). Statistics are updated as of 31 December 2022.



TRENDS POPULATION TREND SINCE 2015

POPULATION DECREASE TREND SINCE 2015*



* Decreases result from voluntary repatriation, resettlement and inactivation, including due to deaths

Disclaimer: The boundaries and names shown and the designations used on the map do not imply official endorsement or acceptance by the United Nations. Dotted line represents approximately the Line of Control in Jammu and Kashmir agreed upon by India and Pakistan. The final status of Jammu and Kashmir has not yet been agreed upon by the parties. Creation date: 17 January 2023 Data Sources: Afghan National Registration (ANR) Database, UNHCR.

More information available on UNHCR: data portal, <https://data2.unhcr.org/en/country/pak>, Feedback: Information Management Unit at pakistan@unhcr.org