

**Population**  
Refugees and asylum-seekers

Individuals: **133,336**  
Households: **23,871**

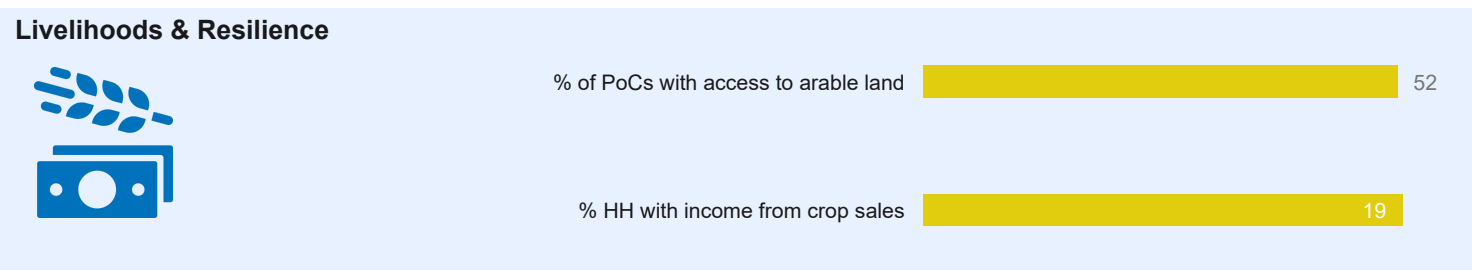
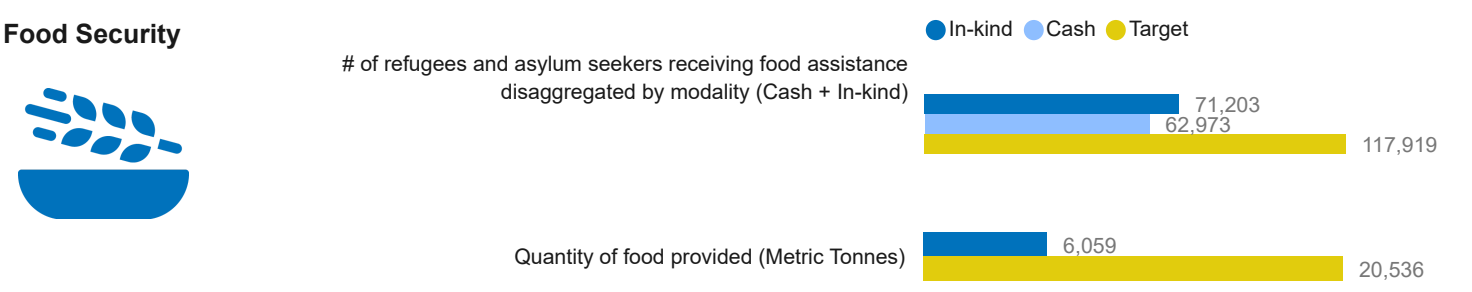
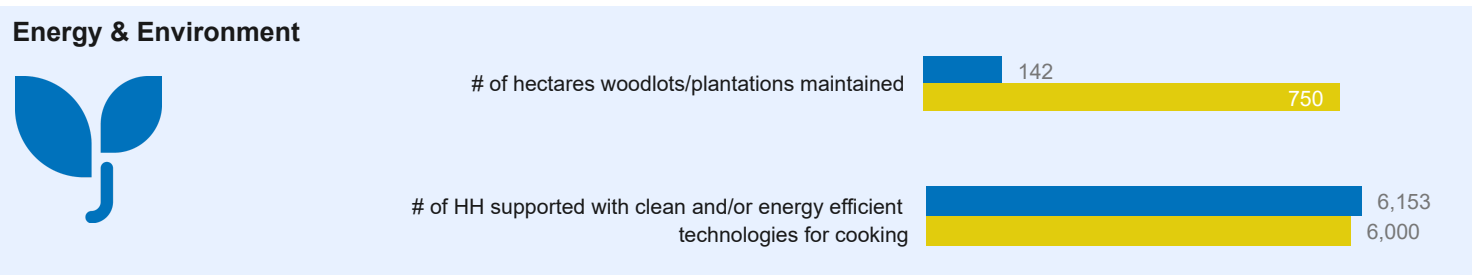
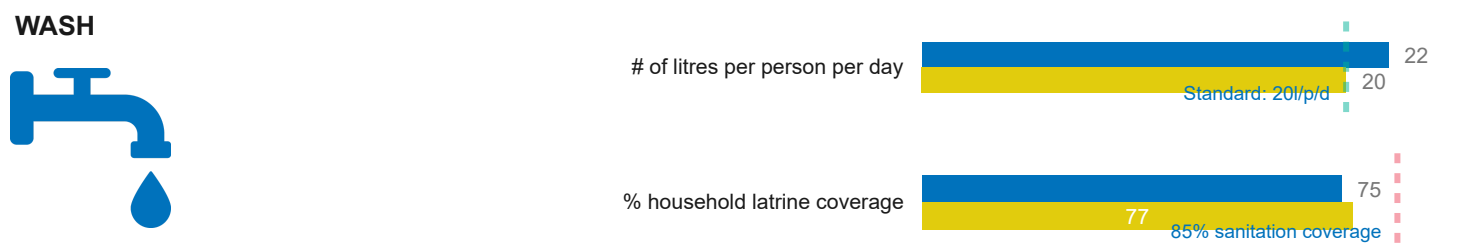
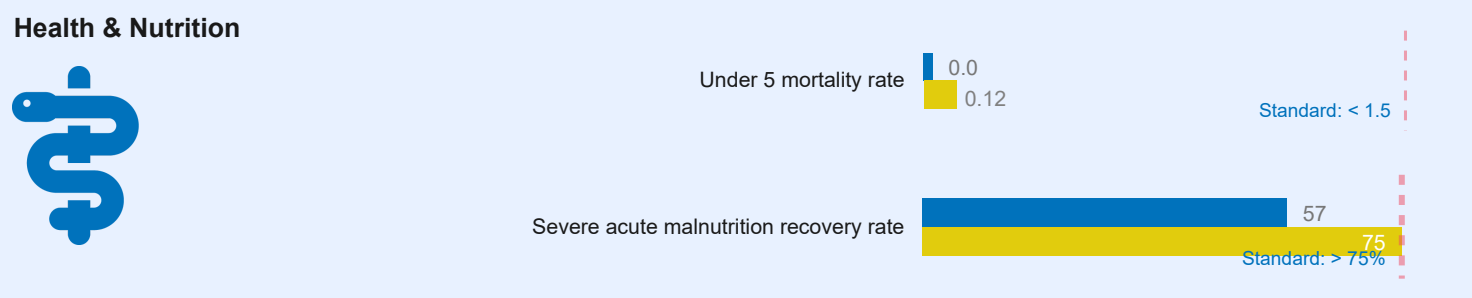
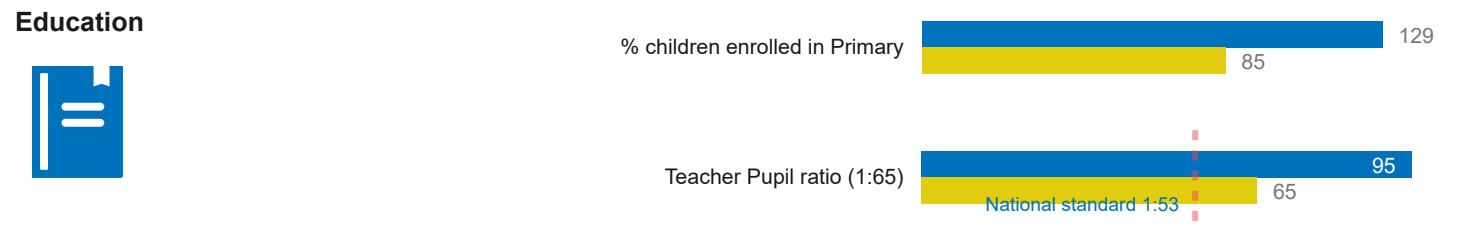
**Settlement**  
Rhino

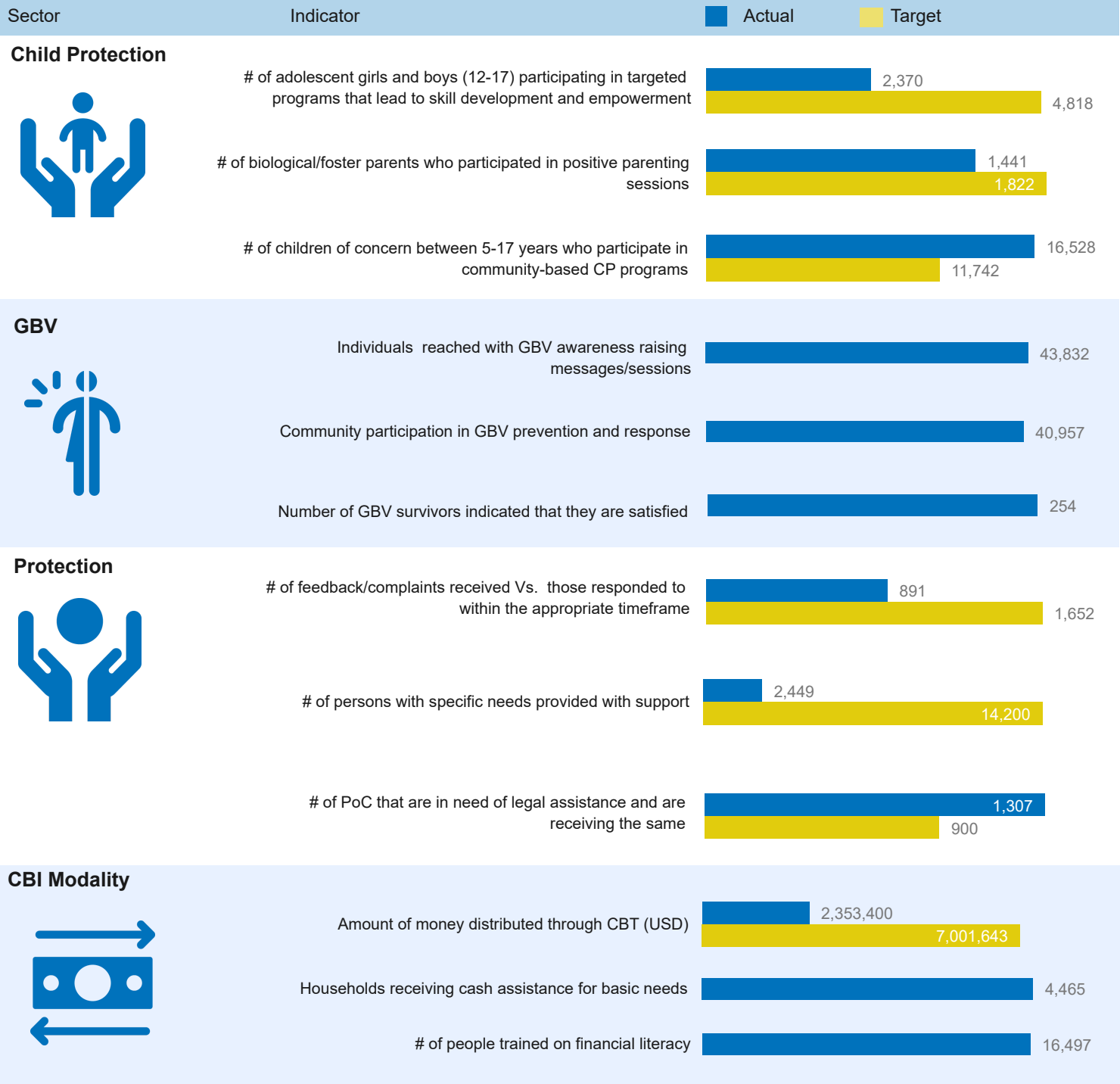
**Target year**  
2022

**UCRRP Partners: 36**

GOV'T **03** UN Agencies **05**  
NGOs **06** INGOs **22**

Sector	Indicator	Actual	Target
--------	-----------	--------	--------





### List of Partners who reported as of Q4 2022, UN Agencies and Government

#### National NGOs

CEFORD, Kulika, NURI, PALM Corps, SeedEffect, and TPO

#### International NGOs

ACAV, ANCHOR, AVSI, CARE, DCA, DRC, FRC, HI, ICRAF, IRC, JAM, Malteser, MC, Plan, PWJ, SCI, VE, WCH, WIU, WMU, WVI and ZOA

#### UN Agencies

ILO, UNFPA, UNHCR, UNICEF and WFP

#### Government

OPM, Madi Okollo and Terego DLGs