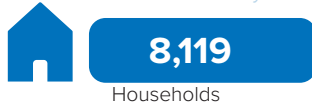


## Total Arrivals from Ethiopia



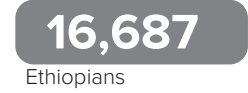
## Introduction:

In response to the influx of Ethiopian refugees into eastern Sudan, UNHCR and the Government of Sudan, in collaboration with other partners, opened Um Rakuba refugee camp in Gedaref State on 12 November 2020. The first group of refugees were relocated from the transit centres at the border to this site on 13 November 2020. The majority of the refugees in Um Rakuba camp are from the Tigray region of Ethiopia. As of end January 2023, the camp accommodates 16,372 refugees, all of whom are biometrically registered and provided with assistance. The dashboard below presents the population profile for Um Rakuba camp.

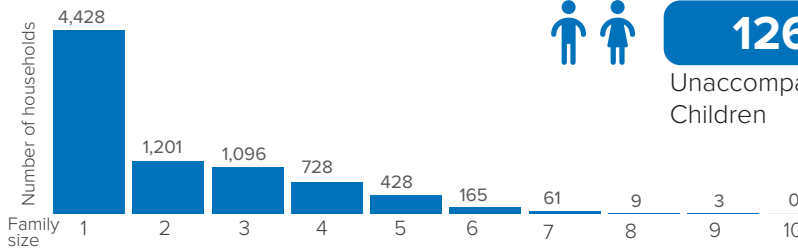
## Persons with Specific Needs



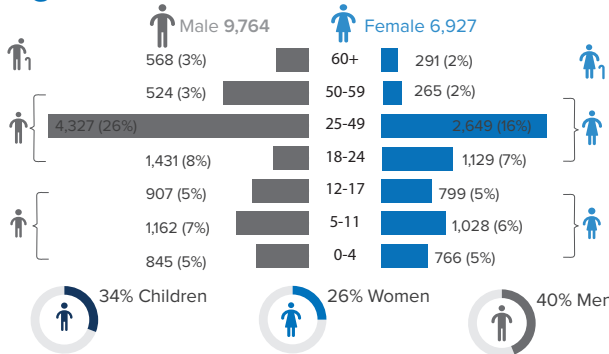
## Country of Origin



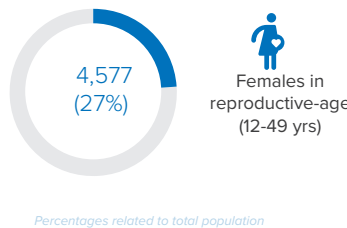
## Family Size



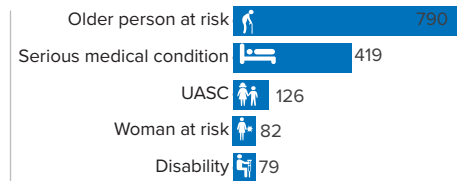
## Age-Gender Breakdown



## Reproductive-Age Women/Girls

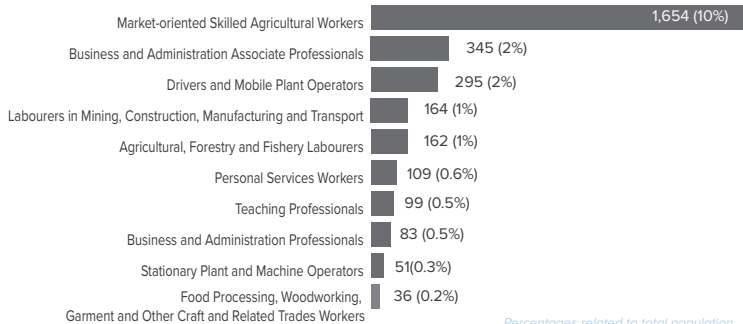


## Specific Needs (Top 5)



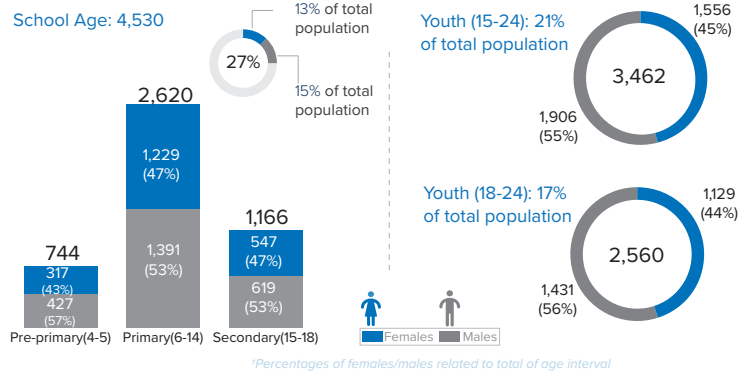
\*UASC: Unaccompanied or separated child  
 Source: ProGres v4/Rapp

## Occupation (Top 10)

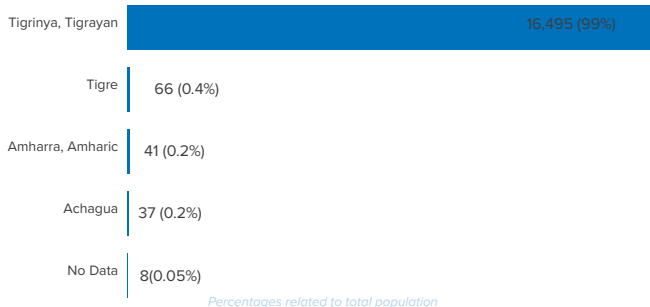


\*Occupation and skills of population aged 18 and above

## School Age Children and Youth



## Ethnicity (Top 5)



## Top 5 Areas of Origin (Ethiopia Admin 3)

