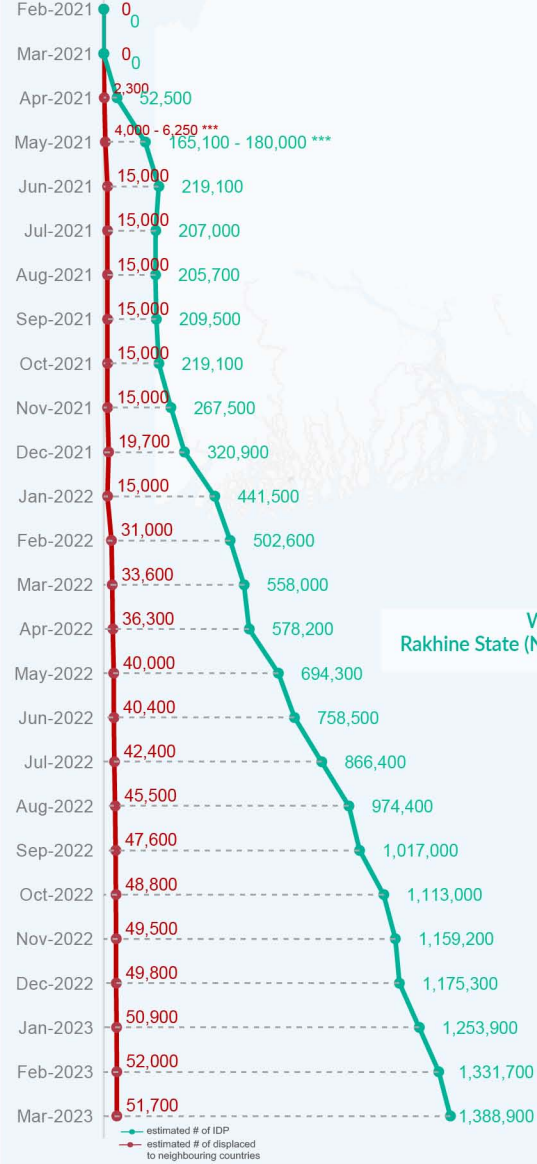


**Key figures**

Estimated # of IDPs → 1,388,900  
 Estimated # of displaced to neighbouring countries → 51,700

Source : UN in Myanmar

**Estimated displacement figures by Month**



\*58,800 persons are displaced by armed conflict in neighbouring Kayah State while 6,800 persons are displaced by inter-EAO conflict between SSPP and RCSS

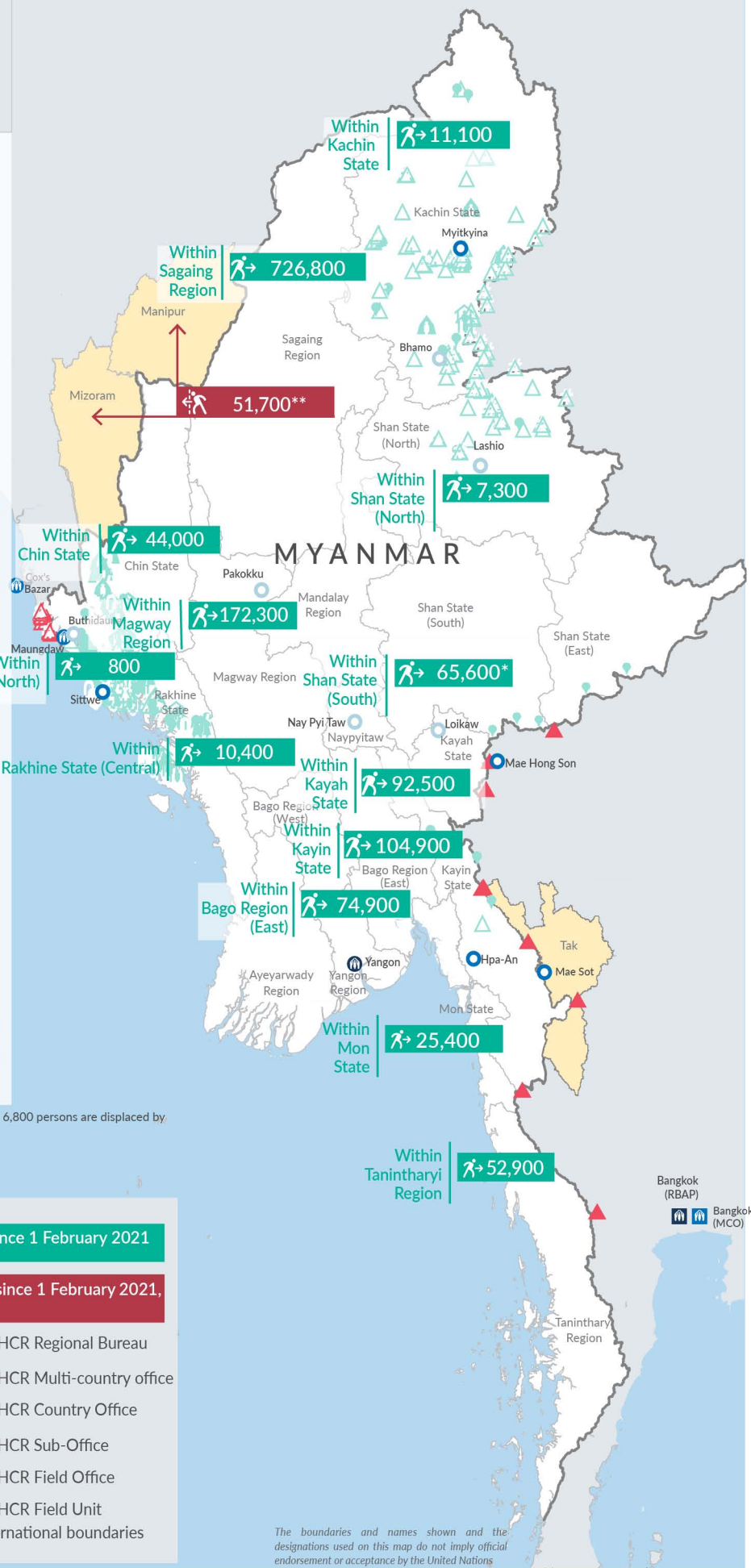
\*\*UN Estimates

\*\*\*Range of figures was used while data collection was in progress

Estimated internal displacement within Myanmar since 1 February 2021 (rounded to the nearest hundred)

Estimated displacement to neighbouring countries since 1 February 2021, who remain displaced (rounded to the nearest hundred)

- IDP unplanned settlement (pre-1 Feb 2021)
- IDP Center (pre-1 Feb 2021)
- IDP spontaneous location (pre-1 Feb 2021)
- IDP planned settlement (pre-1 Feb 2021)
- Temporary shelter for displaced people from Myanmar
- Refugee, planned settlement
- States/Provinces with new arrivals
- UNHCR Regional Bureau
- UNHCR Multi-country office
- UNHCR Country Office
- UNHCR Sub-Office
- UNHCR Field Office
- UNHCR Field Unit
- International boundaries



The boundaries and names shown and the designations used on this map do not imply official endorsement or acceptance by the United Nations

## Key figures


**1,716,900**

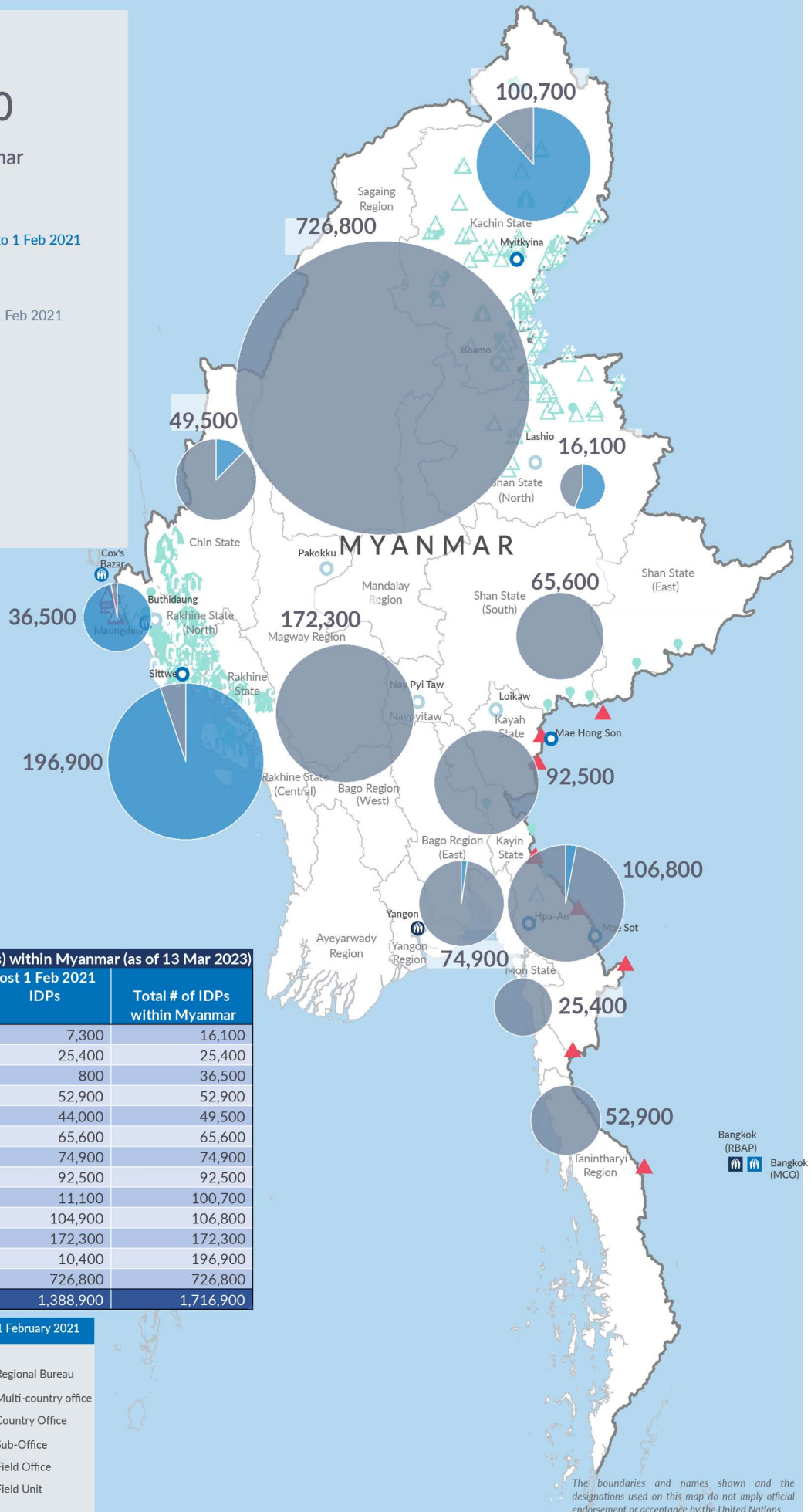
Estimated total IDPs within Myanmar


**328,000**  
 Estimated # of IDPs displaced prior to 1 Feb 2021  
 (As of 31 Dec, 2022)



**1,388,900**  
 Estimated # of IDPs displaced post 1 Feb 2021  
 (As of 13 Mar, 2023)

 Prior to 1 Feb 2021  
 Post 1 Feb 2021

Source : UN in Myanmar


**Estimated total internally displaced person (IDPs) within Myanmar (as of 13 Mar 2023)**

State/Region	Prior to 1 Feb 2021 IDPs	Post 1 Feb 2021 IDPs	Total # of IDPs within Myanmar
Shan State (North)	8,800	7,300	16,100
Mon State	-	25,400	25,400
Rakhine State (North)	35,700	800	36,500
Tanintharyi Region	-	52,900	52,900
Chin State	5,500	44,000	49,500
Shan State (South)	-	65,600	65,600
Bago Region (East)	-	74,900	74,900
Kayah State	-	92,500	92,500
Kachin State	89,600	11,100	100,700
Kayin State	1,900	104,900	106,800
Magway Region	-	172,300	172,300
Rakhine State (Central)	186,500	10,400	196,900
Sagaing Region	-	726,800	726,800
<b>Grand Total</b>	<b>328,000</b>	<b>1,388,900</b>	<b>1,716,900</b>


**Estimated internal displacement within Myanmar Pre+Post 1 February 2021**  
 (rounded to the nearest hundred)

-  IDP unplanned settlement (pre-1 Feb 2021)
-  IDP Center (pre-1 Feb 2021)
-  IDP spontaneous location (pre-1 Feb 2021)
-  IDP planned settlement (pre-1 Feb 2021)
-  Temporary shelter for displaced people from Myanmar
-  Refugee, planned settlement
-  International boundaries
-  UNHCR Regional Bureau
-  UNHCR Multi-country office
-  UNHCR Country Office
-  UNHCR Sub-Office
-  UNHCR Field Office
-  UNHCR Field Unit

The boundaries and names shown and the designations used on this map do not imply official endorsement or acceptance by the United Nations